

DN05101/D T1 Transformer Designs (Available from Wurth Electronics)

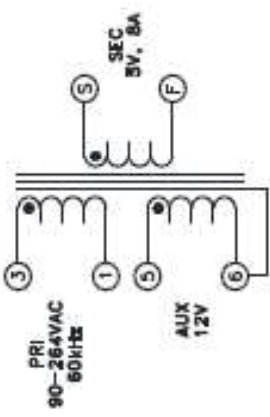
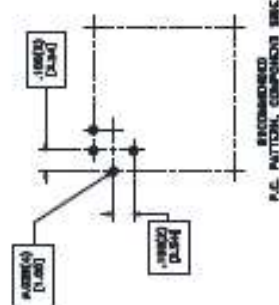
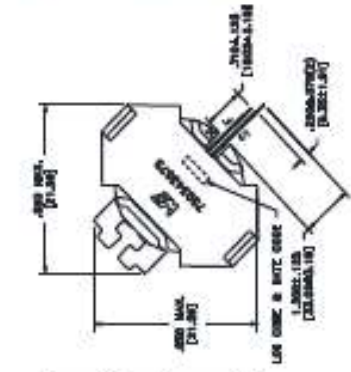


ELECTRICAL SPECIFICATIONS @ 25° C unless otherwise noted:

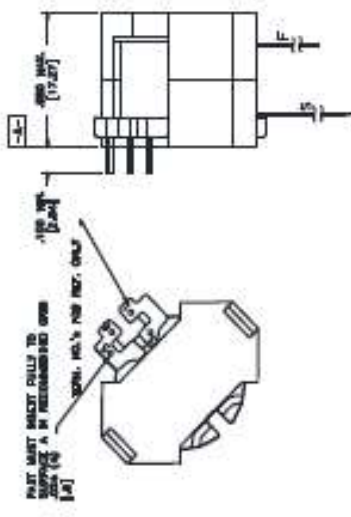
PARAMETER	TEST CONDITIONS	VALUE
D.C. RESISTANCE	3-1 @20°C	0.437 ohms max.
D.C. RESISTANCE	3-F @20°C	0.010 ohms max.
D.C. RESISTANCE	5-6 @20°C	0.362 ohms max.
INDUCTANCE	3-1 10kHz, 1.0V, L _s	360.00µH ±10%
LEAKAGE INDUCTANCE	3-1 B _L (B+F+S+6), 100kHz, 1.0V, L _s	10.0µH max.
DIELECTRIC	1-3 B _L (1+6), 3750VAC, 1 second	3000VAC, 1minute
TURNS RATIO	(3-1)/(3-F)	12.67:1, ±2%
TURNS RATIO	(3-1)/(5-6)	6.33:1, ±2%

GENERAL SPECIFICATIONS:

OPERATING TEMPERATURE RANGE: -40°C to +125°C including temp rise
 Designed to comply with the following requirements as defined by EC60950-1, EN60950-1, UL60950-1CS&E0950-1 and AS/NZS60950.1
 - Ratiotaped insulation for a primary circuit at a working voltage of 285Vrms, 400Vpeak, Overvoltage Category II.



CUSTOMER TERMINAL	RoHS	LEAD(Pb)-FREE
Sn 88%, Ag 4%	Yes	Yes



Wire insulation & RoHS status not affected by wire color. Wire insulation color may vary depending on availability.

DFM	Package Specifications	Wire insulation color may vary depending on availability.
DATE	Method: Tray	Tolerances unless otherwise specified: Angles: ±1° Decimals: ±.03 [.13] Fractions: ±1/64 Footprint: ±.001 [.03]
ENG	PK-G-1137	This drawing is dual dimensioned. Dimensions in brackets are in millimeters.
REV.	00	
DATE	11/17/2017	

DRAWING TITLE	PART NO.
TRANSFORMER	750343575
SPECIFICATION SHEET 1 OF 1	