

Table of Contents


1	Title
2	Block Diagram
3	MKW41Z MCU
4	OpenSDA INTERFACE
5	I/O Headers and Power Supply

Revisions & Change Log

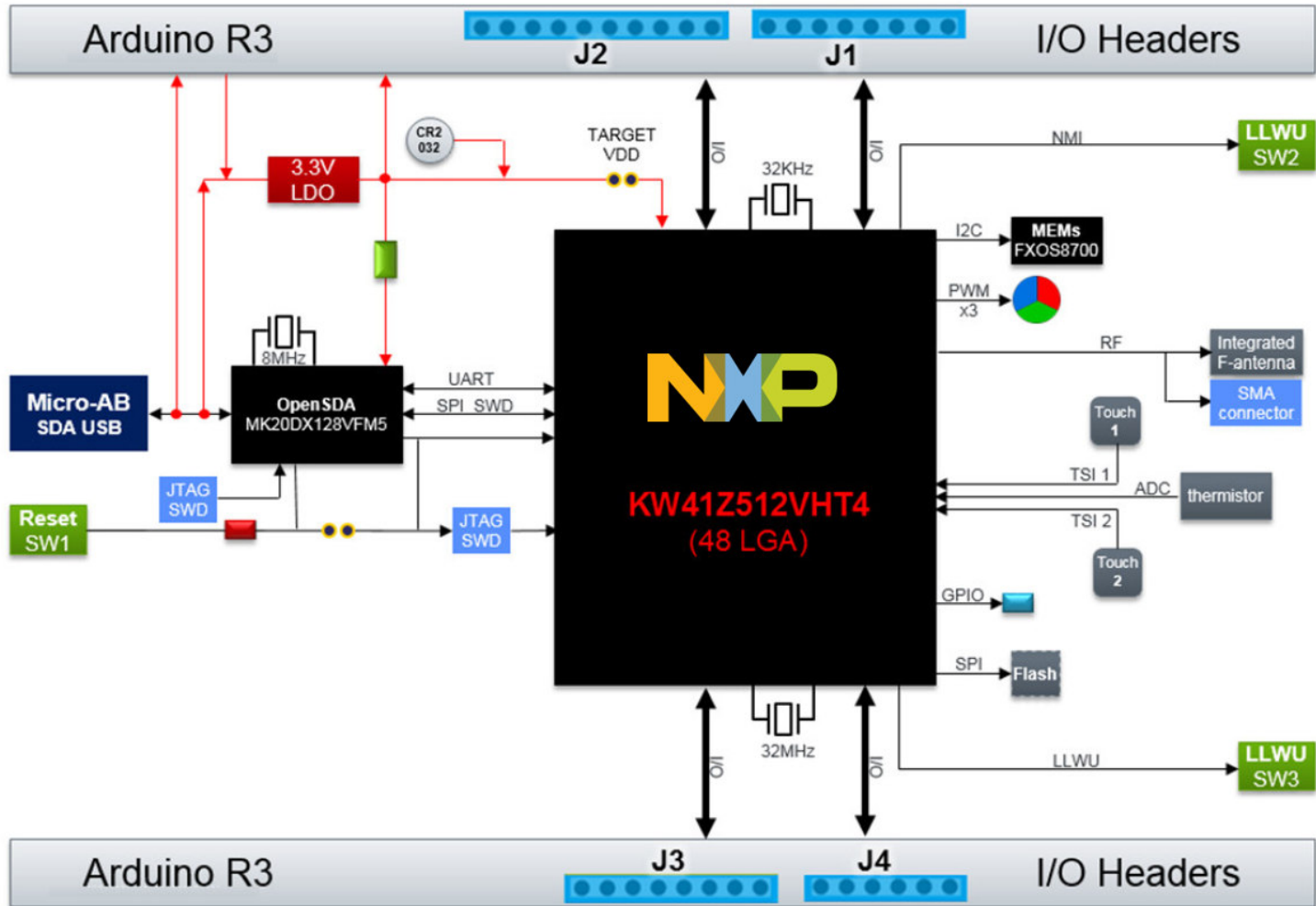
Rev	Description	Date	Approved
X1	Initial Draft	10/22/15	A. QUIROZ
X2	Update connection/labels	11/30/15	A. QUIROZ
X3	BOM update	12/09/15	A. QUIROZ
A	RF BOM update, ADC selector added, VDD update U9 1-14, VDD update on U1 27-28	10/03/16	A. QUIROZ
A1	Update U9 1 and LED, add capacitor to V_EXT	06/20/16	SHAWN
A2	BOM update for C75,R85, R52	07/06/16	SHAWN
A3	BOM update for J1,J3 etc	07/21/16	SHAWN

FREEDOM KW41Z

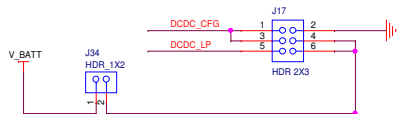
Bluetooth Smart/802.15.4/Generic FSK

	Microcontroller Product Group 6501 William Cannon Drive West Austin, TX 78735-8598
This document contains information proprietary to NXP and shall not be used for engineering design, procurement or manufacture in whole or in part without the express written permission of NXP Semiconductors.	
ICAP Classification: CP: IUD: X PUB:	
Designer: A. QUIROZ	Drawing Title: FRDM-KW41Z
Drawn by: A. QUIROZ	Page Title: TITLE PAGE
Approved: M. HUNT	Size C Document Number SCH-29102 PDF: SPF-29102 Rev A3
Date: Tuesday, August 02, 2016 Sheet 1 of 5	

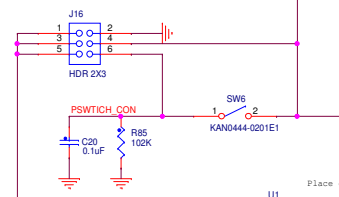
- Unless Otherwise Specified:
 All resistors are in ohms, 5%, 1/8 Watt
 All capacitors are in uF, 20%, 50V
 All voltages are DC
 All polarized capacitors are aluminum electrolytic
- Interrupted lines coded with the same letter or letter combinations are electrically connected.
- Device type number is for reference only. The number varies with the manufacturer.
- Special signal usage:
 _B Denotes - Active-Low Signal
 <> or [] Denotes - Vectored Signals
- Interpret diagram in accordance with American National Standards Institute specifications, current revision, with the exception of logic block symbology.



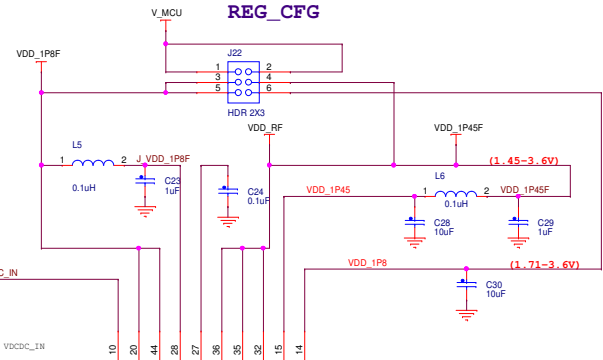
DCDC_CFG



PSW_CFG

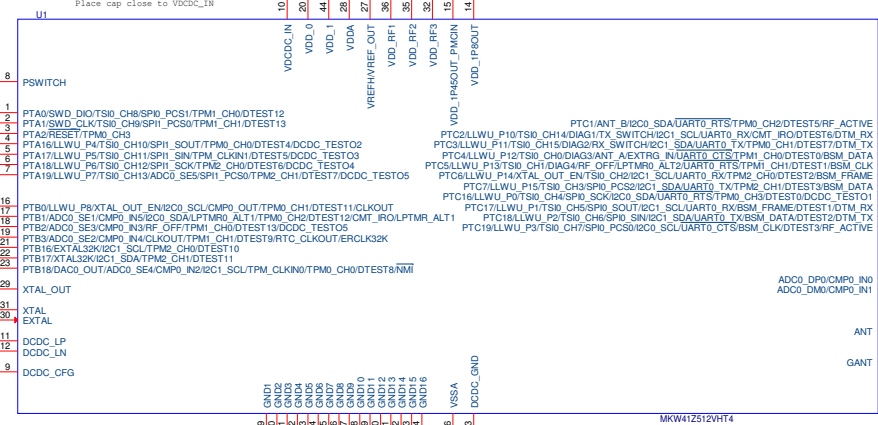


REG_CFG

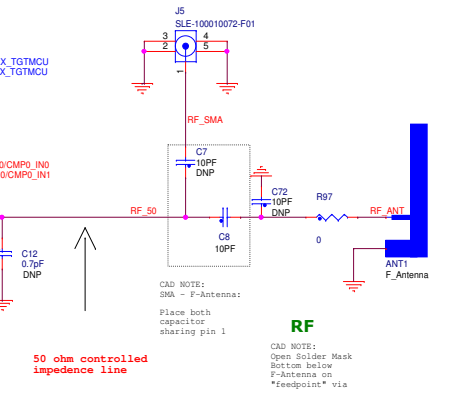


Power Configuration

	PWR_CFG J18	PSW_CFG J16	DCDC_CFG J17	REG_CFG J22
Bypass Mode (auto start) VDDCG_IN (1.7V to 3.6V) Operation 1.8V - 3.6V	1-2	1-2	3-4	1-3 2-4 5-6
Boost Mode (auto start) VDDCG_IN (0.5V to 1.8V) Single Battery Operation	2-4	3-4	1-2 5-6	5-6
Buck Mode (manual start) VDDCG_IN (1.8V to 4.2V) Coin Cell Battery Operation	2-4	5-6 press SW6 to start	3-4	5-6
Buck Mode (auto start) VDDCG_IN (1.8V to 4.2V) Coin Cell Battery Operation	2-4	3-4	3-4	5-6

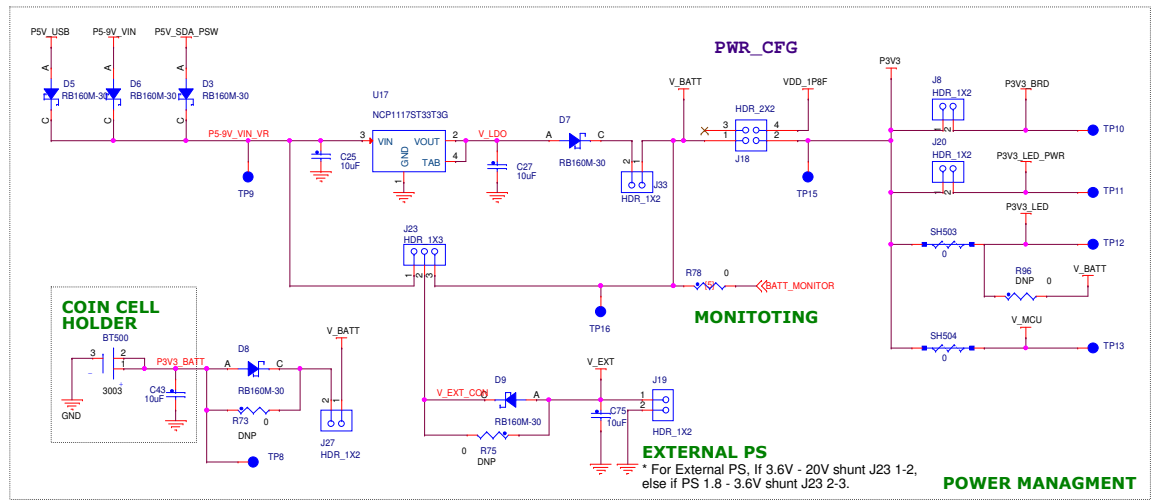
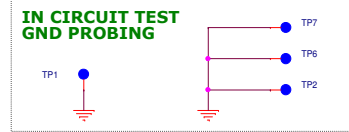
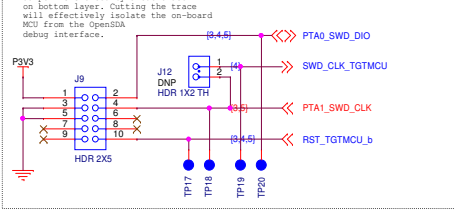


MKW41Z512VHT4 MCU



RF

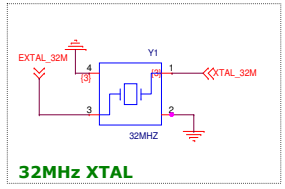
SWD CONNECTOR



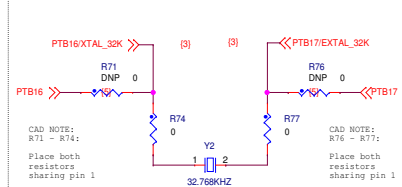
MONITOTING

EXTERNAL PS

POWER MANAGMENT

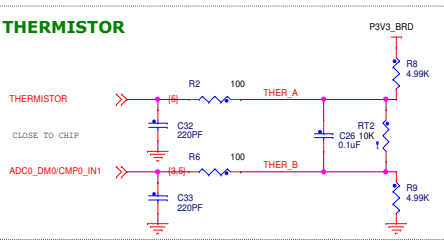


32MHz XTAL

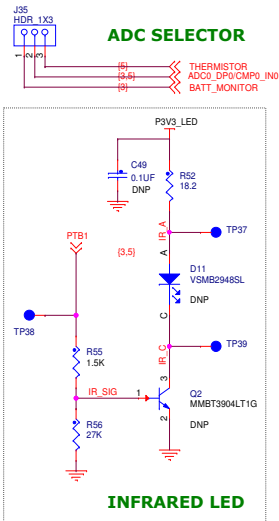


32kHz XTAL

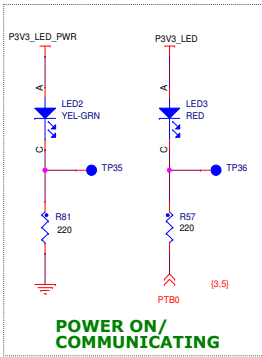
THERMISTOR



ADC SELECTOR

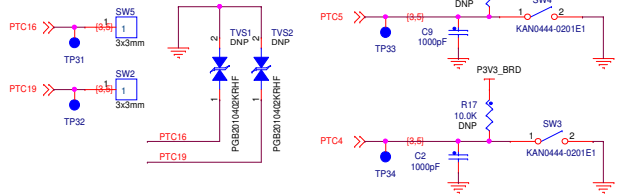


INFRARED LED

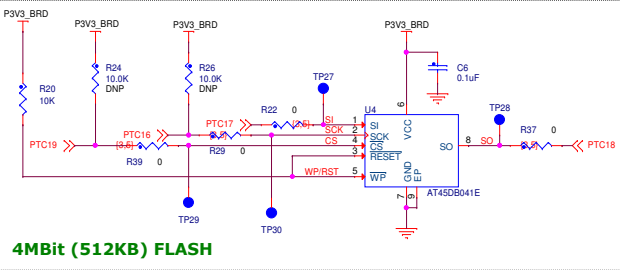


POWER ON/ COMMUNICATING

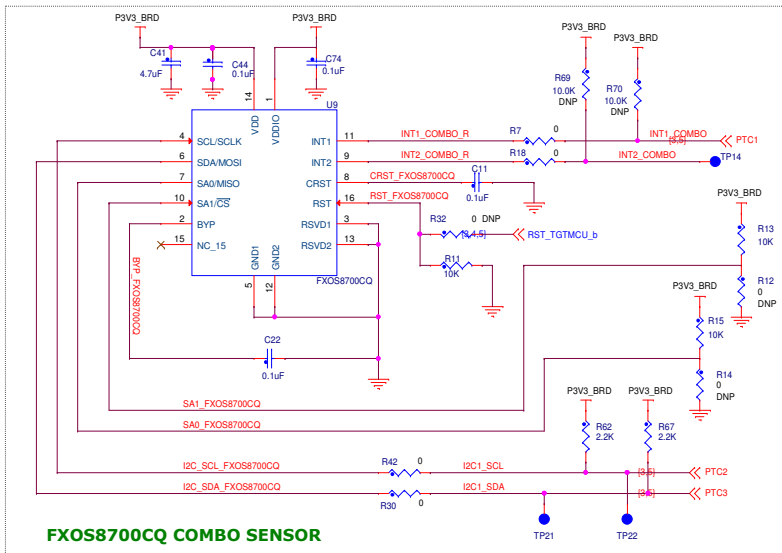
ELECTRODES



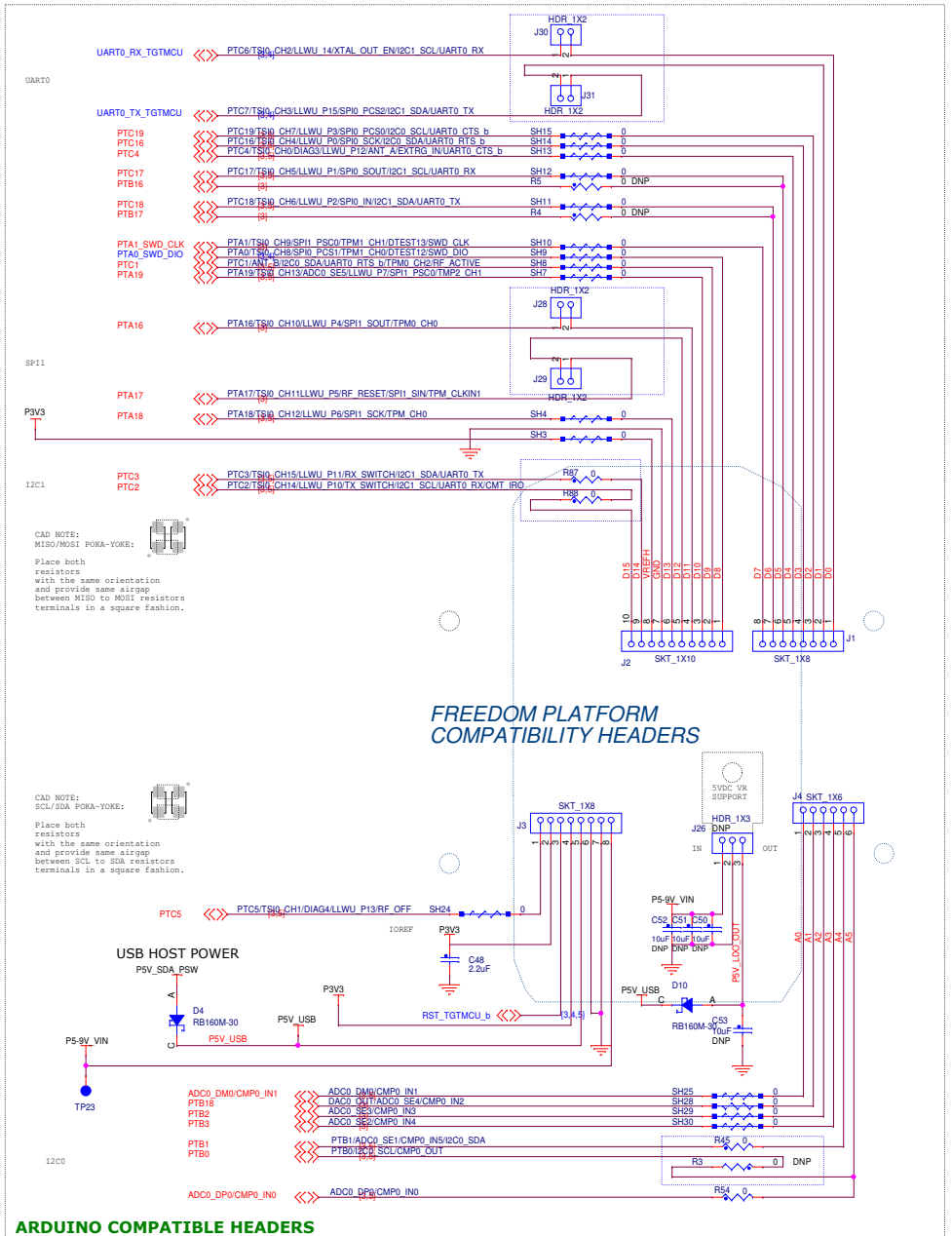
INTERRUPT PUSH BUTTONS



4Mbit (512KB) FLASH

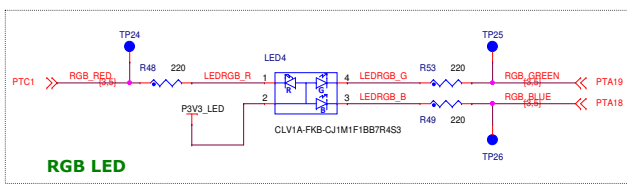


FXOS8700Q COMBO SENSOR



FREEDOM PLATFORM COMPATIBILITY HEADERS

USB HOST POWER



RGB LED

NXP

ICAP Classification: CP ILO: X PUBL:

Drawing Title: **FRDM-KW41Z**

Page Title: **ARDUINO SHIELDS & PERIPHERALS**

Size C Document Number SCH-29102 PDF: SPF-29102 Rev A3

Date: Tuesday, August 02, 2016 Sheet 5 of 5